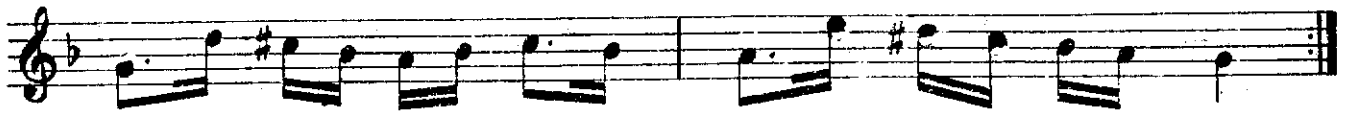


مقام ترکیب



The first staff of music is written on a single five-line staff with a treble clef. It begins with a key signature of one flat (B-flat) and a common time signature (C). The melody consists of the following notes: G4 (quarter), A4 (quarter), B-flat4 (quarter), A4-G4 (beamed eighth notes), F4 (quarter), E4 (quarter), D4 (half). There is a repeat sign after the D4 note. The second measure of the repeat contains: G4 (quarter), A4 (quarter), B-flat4 (quarter), A4-G4 (beamed eighth notes), F4 (quarter), E4 (quarter), D4 (half). The staff ends with a double bar line.

Jimmy Koo